

# BIT STOOL



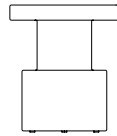
normann  
COPENHAGEN



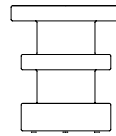
## EVERY BIT IS A BIT UNIQUE

Bit is an aesthetically pleasing, versatile stool with countless possibilities for your home. Use Bit as a pedestal for a floral arrangement, as a side table for a lamp, or as impromptu seating for that unexpected dinner guest. A particular process, where plastic fragments are heated to a 120°C melting point, makes it possible to repeatedly reuse and reheat the material without altering its properties. The result is a stool design with a distinctive thickness and composition, making every Bit a bit unique.

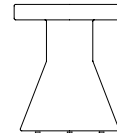
## COLLECTION OVERVIEW



**Bit Stool**  
H: 42 x Ø: 36 cm



**Bit Stool Stack**  
H: 42 x Ø: 36 cm



**Bit Stool Cone**  
H: 42 x Ø: 36 cm





## PRODUCT FACTS

### Description

Bit is an aesthetically pleasing, versatile stool with countless possibilities for the home. Inspired by clear-cut shapes such as monoliths and columns, designer Simon Legald's take on the stool is both bold and multifunctional. Bit Stool is suitable for both indoor and outdoor environments, withstanding temperatures from -10°C to +50°C

### Designer / Year Of Design

Simon Legald / 2021

### Material

LDPE and PE

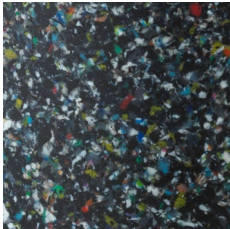
### Construction

Bit stool is made using a rotational molding technique with flexible thermoplastic Low-Density Polyethylene (LDPE).

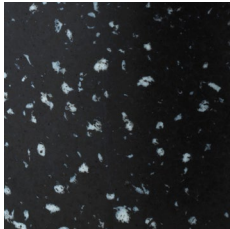
### Maintenance

Clean with damp cloth.

**MATERIAL OPTIONS**



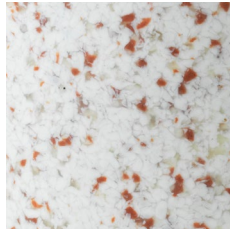
Black Multi



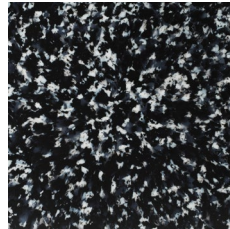
Black



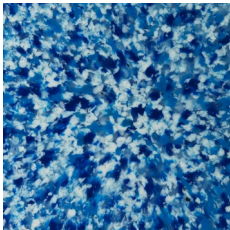
White Multi



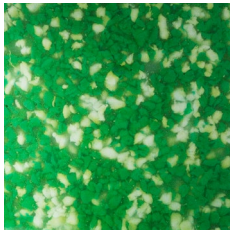
White



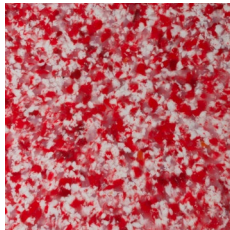
Black/White



Blue



Green



Red



Yellow



White/White

Please note that each stool is unique and differences in patterns and colors may occur.

# Contact

## Normann Copenhagen

Niels Hemmingsens Gade 12, 1153 Copenhagen, Denmark

[normann@normann-copenhagen.com](mailto:normann@normann-copenhagen.com)

+45 35 55 44 59

**normann**

C O P E N H A G E N